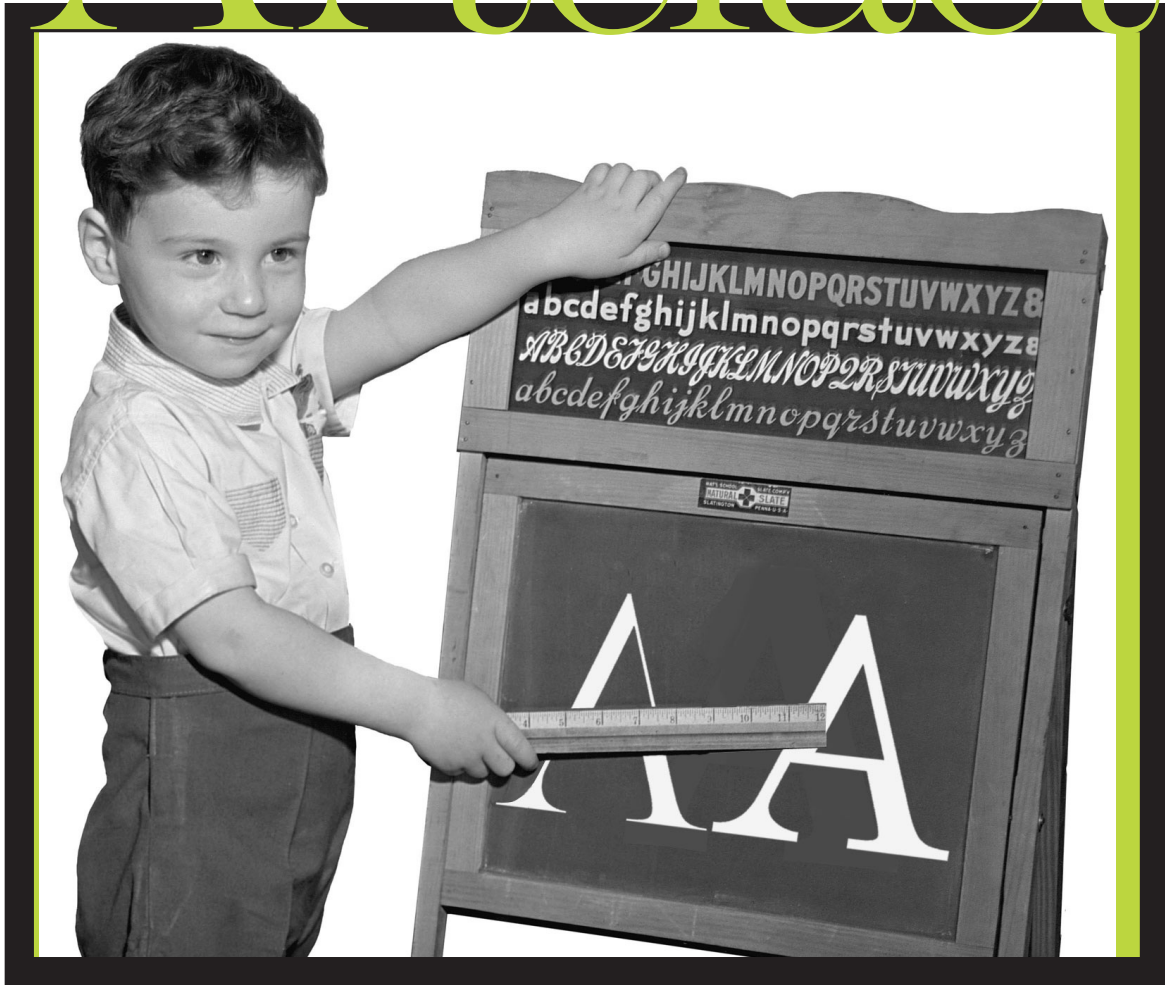


Artefact



Shinntype

Artefact Light
Artefact Regular
Artefact Bold

A Artefact

Literally and playfully Post-modern, Shinn deconstructs the 19th century Modern (Didone) style to question the conventions of stress inherited from earlier, calligraphically-informed types, governing the acceptability of which stems are thick, which are thin. With the Didone vocabulary artfully rephrased, a novel typographic color of corroded notan emerges.

THE HISTORY
OF THE TOWN
is reflected in
its monuments

Die Geschichte der Stadt
versinnbildlicht sich
in ihren Denkmälern



L'histoire de la ville
est symbolisée
dans les monuments

ARTEFACT LIGHT

A B C D E F G H I

J K L M N O P Q R

S T U V W X Y Z

a b c d e f g h i j k l m n

o p q r s t u v w x y z

1 2 3 4 5 6 7 8 9 0

ARTEFACT REGULAR

A B C D E F G H I

J K L M N O P Q R

S T U V W X Y Z

a b c d e f g h i j k l m n

o p q r s t u v w x y z

1 2 3 4 5 6 7 8 9 0

ARTEFACT BOLD

A B C D E F G H I

J K L M N O P Q R

S T U V W X Y Z

a b c d e f g h i j k l m n

o p q r s t u v w x y z

1 2 3 4 5 6 7 8 9 0

full character set

ABCDEFGHIJKLMNOPQRSTUVWXYZ

#0123456789

abcdefghijklm

nopqrstuvwxyz

@áàâãäåæçéèêëfi

íîïñóòôõöœßúùûü

ÁÀÂÃÄÅÆÇÉÈÊË

ÍÎÏÑÓÒÔÕÖŒÚÙÛÜ

ªº™•.∴∶∷∸∹?!

[„«“”»‚‹›]¶*†‡§

(€\$£¥ƒ) & © ® \| / ;

{ = + ± ÷ < > % ‰ μ ° }

ˆ ˜ ˘ ˙ ˚ ˛ ˜ ˘ ˙ ˚ ˛